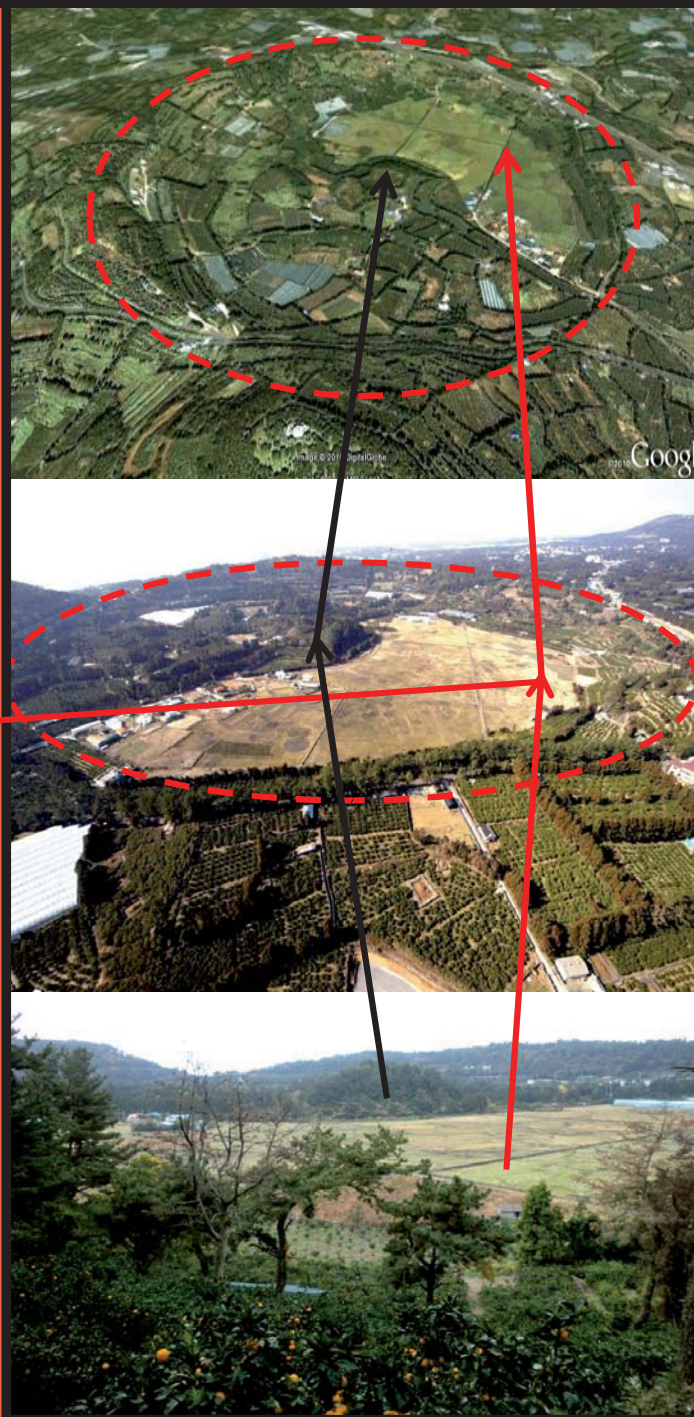
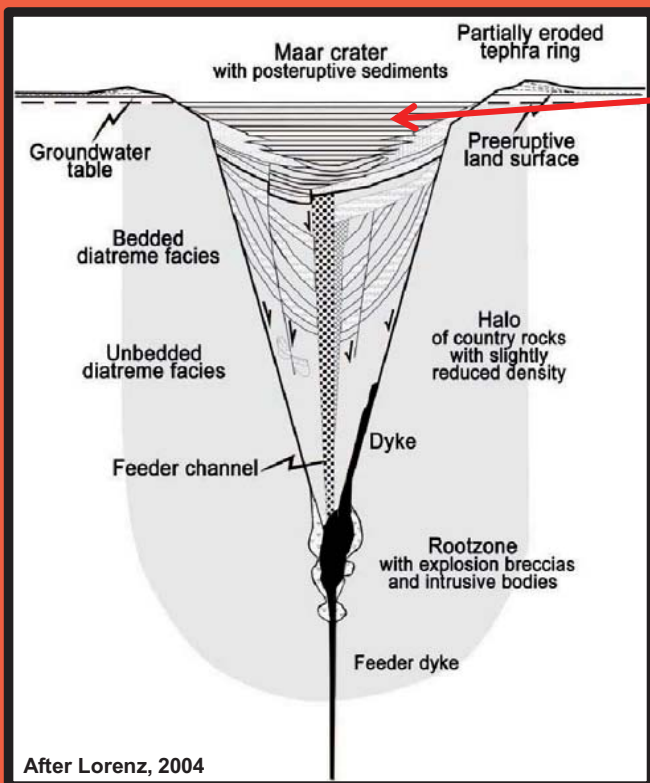




# Hanon-Maar / Jeju Island / South Korea



**Definiton „Maar“:** This type of volcano is formed, when magma on the way to surface comes in contact with ground water. This causes a violent steam explosion! This explosion blasts out the rocks of the underground and leaves behind a funnel-shaped crater. The rocks that fell down to the surface around the crater formed a tephra ring. This wall is an embankment of ashes and tuff. This steam eruption produces a negative form of volcano in the terrain which is so called a **maar**. Later on rain and ground water collects in the crater and maar lake is born.



The „**Hanon-Maar**“ is located on the south coast of the island Jeju 033°14'30"N - 033°15'00"N, 126°32'45"E - 126°33'15"E near the town Seogwipo.  
 Diameter: 1 – 1.15 km  
 Altitude: 143 - 53 m  
 Rim to floor difference: 90 m  
 Age: > 40.000 – 60.000 years  
 Maar-Lake-Sediments: +/- 15 m

## Why is the Hanon-Maar so important for Jeju?

1. The largest volcanic crater!
2. The only maar-type volcano!
3. It is a important climate archive of the past in East Asia for understanding global climatic changes in the future!

## What must be done?

1. Geological Research: Coring, sampling, examing = Results
2. Conservation & Restoration for the future, Nature-Protection!
3. Volcanic Maar-Geo-Tourism & Jeju-Maar-Museum